

ED Series

Exterior Door for Walls and Ceilings

Elmdor® Exterior Access Doors are manufactured and engineered to provide access to exterior applications ensuring years of protection against outdoor elements. Our new technology helps to manifest resistance to water and vapor. Our Exterior Door includes foam insulation and neoprene gasket on four sides.

Door is fabricated from 16 gage, galvanized steel with a prime coat finish and 1" thick rigid foam insulation.

Frame is fabricated from 16 gage, galvanized steel with a prime coat finish and provided with bolt holes.

Hinge is concealed and operates completely out of sight, so that only the door and frame are visible.

Exterior latch is a cylinder lock that features a knurled knob or key operation.

Finish is a prime coat suitable for painting.

Guide Specification

Provide Elmdor® ED Series, Exterior Access Doors (specify model number and options). Access door frame shall be fabricated from 16 gage galvanized steel with a prime coat finish and provided with bolt holes. Access door panel shall be fabricated from 16 gage galvanized steel with a prime coat finish. Door shall be filled with 1" thick, rigid foam insulation and neoprene gasket on four sides. Access door shall have a concealed hinge with exterior latching cylinder lock that features a knurled knob or key operation. Finish shall be prime coat suitable for painting



Member of U.S. Green
Building Council

ED

Revised: 10/28/15

Recyclable
Product



MODEL NUMBER AND OPTIONS SELECTION
BASE MODEL NUMBER
☐ ED Exterior Door for Walls and Ceilings

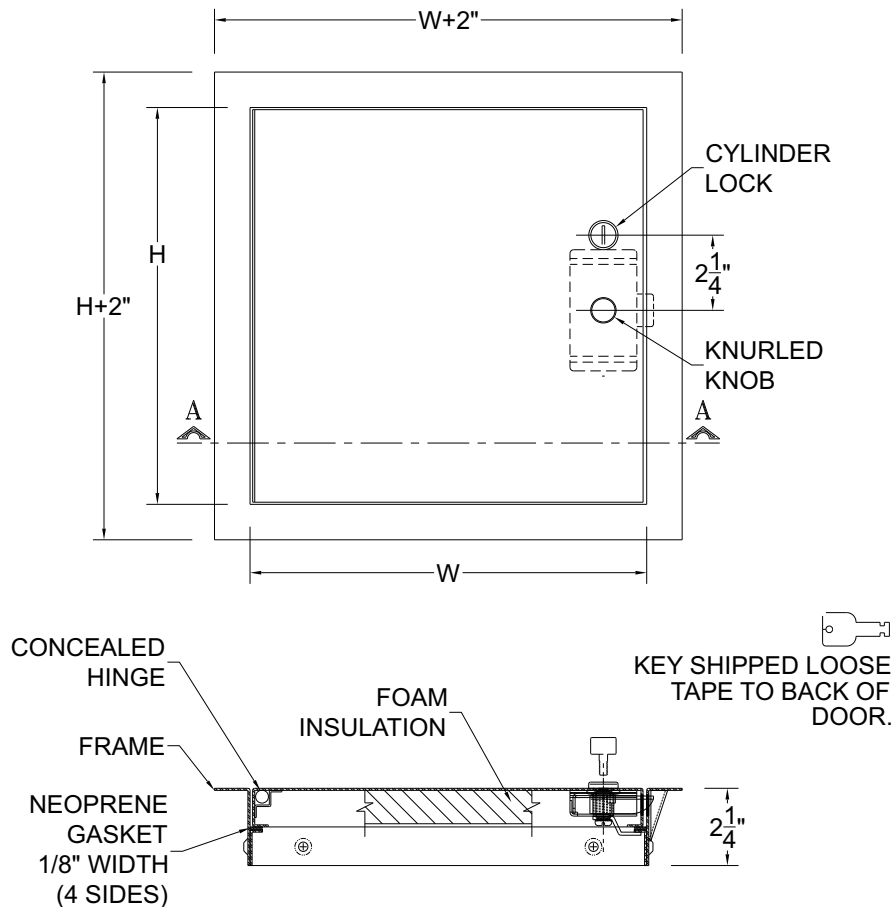
Suffix Options
☐ - GB Galvanized Drywall Bead
☐ - SS Stainless Steel Construction.
 (Type 304 No 4 Finish Satin Finish)

STANDARD AVAILABLE SIZES

Special sizes available upon request.

NOMINAL DOOR SIZE (W x H)	WALL OPENING	LOCK QNTY	WEIGHT
ED 12" x 12"	12-3/8" x 12-3/8"	1	15 lbs.
ED 14" x 14"	14-3/8" x 14-3/8"	1	17 lbs.
ED 18" x 18"	18-3/8" x 18-3/8"	1	20 lbs.
ED 24" x 24"	24-3/8" x 24-3/8"	1	28 lbs.
ED 22" x 30"	22-3/8" x 30-3/8"	2	32 lbs.

NOMINAL DOOR SIZE (W x H)	WALL OPENING	LOCK QNTY	WEIGHT
ED 30" x 30"	30-3/8" x 30-3/8"	2	38 lbs.
ED 24" x 36"	24-3/8" x 36-3/8"	2	40 lbs.
ED 36" x 36"	36-3/8" x 36-3/8"	2	50 lbs.
ED 36" x 48"	36-3/8" x 48-3/8"	2	81 lbs.



Dimensions are subject to manufacturer's tolerance of plus or minus 1/4". Elmdor/Stoneman assumes no responsibility for use of void or suspended data. Please visit www.elmdorstoneman.com for most current specifications. © Copyright 2009 Elmdor/Stoneman, City of Industry, CA, A Division of Acorn Engineering Company.

SELECTION SUMMARY & APPROVAL FOR MANUFACTURING

Model Number & Options _____ Quantity _____
 Company _____ Date _____
 Contact _____ Title _____
 Approval for Manufacturing/Signature _____

ED

Revised: 10/28/15